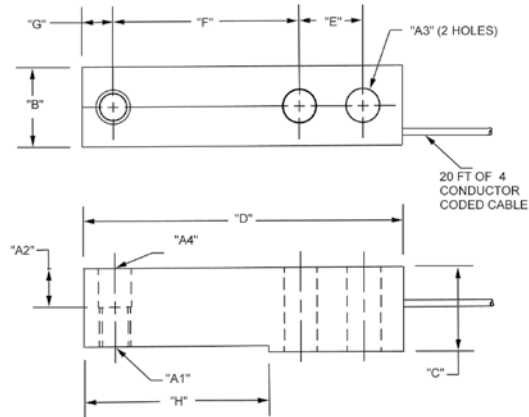


# RLH35 Single-Ended Beam, Stainless Steel NTEP 1:5000 Class III Multiple Cell, Welded-seal, IP67



Picture is a representation of actual product



RATED CAPACITY	DIMENSIONS				DIMENSIONS								
	A1	A2	A3	A4	B	C	D	E	F	G	H	I	
<b>lb/inches</b> 500-5000	1/2-20 UNF-2B	.62	.53	.53	1.21	1.19	5.12	1.00	3.00	.50	2.85	1.120	
<b>kg/mm</b> 453.6-2268	1/2-20 UNF-2B	15.8	13.5	13.5	30.7	30.2	130.05	25.4	76.2	12.7	72.4	28.4	

### SPECIFICATIONS:

<b>Full Scale Output:</b>	3.0 mV/V	<b>Insulation Resistance:</b>	5000 megohms
<b>Bridge Resistance:</b>	350 ohms, nominal	<b>Seal Type:</b>	Welded-seal, IP67
<b>Material/Finish:</b>	Stainless Steel	<b>Cable Length:</b>	20'/6.1 m / 30'/9.1 m
<b>Temperature:</b>	Compensated range 14°F to 104°F/-10°C to 40°C	<b>Cable Color Code:</b>	Green..... + Excitation Black..... - Excitation White..... + Signal Red..... - Signal Yellow..... Shield
<b>Safe Overload:</b>	150% Full scale	<b>Warranty:</b>	Two-year limited warranty
<b>Rated Excitation:</b>	10V DC (15V maximum)		
<b>Nonlinearity:</b>	0.03% Full scale		
<b>Hysteresis:</b>	0.03% Full scale		

### RLH35 ORDER INFORMATION

20ft Cable	Load Rating	Part #	Price
500 lb	(226.8)	106038	\$315.00
1,000 lb	(453.6 kg)	106039	\$315.00
2,500 lb	(1134.0 kg)	106040	\$315.00
4,000 lb	(1814.4 kg)	106041	\$315.00
5,000 lb	(2268.0 kg)	106042	\$315.00

30ft Cable	Load Rating	Part #	Price
500 lb	(226.8)	106044	\$325.00
1,000 lb	(453.6 kg)	106045	\$325.00
2,500 lb	(1134.0 kg)	106046	\$325.00
4,000 lb	(1814.4 kg)	106047	\$325.00
5,000 lb	(2268.0 kg)	106048	\$325.00

### INTERCHANGEABLE PRODUCTS

Manufacturer	Part #	Part #
<b>Mettler Toledo</b>		
500 lb-8 ft cable		TB601019-008
1,000 lb-20 ft cable		TB601016-020
2,500 lb-8 ft cable		TB601016-008
4,000 lb-20 ft cable		TB601017-020
5,000 lb-8 ft cable		TB601018-008

Rice Lake Weighing Systems