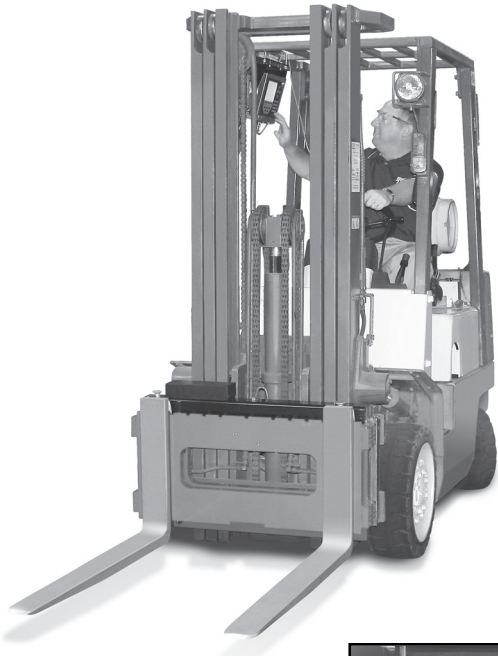
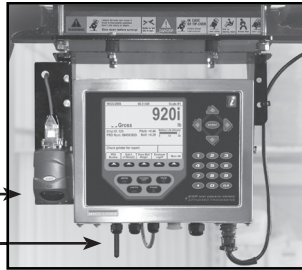


CLS-920i Cargo Lift Scale



Approvals



Symbol® scanner option →

Antenna for WLAN option →

Standard Features

- NTEP-Certified, 5,000 lb
- Two 5,000 lb stainless steel load cells
- Compatible with Class II forklift, 16" cleat style carriage
- Mechanical overload stops promote scale longevity and accuracy
- Panoramic 6" x 20-3/4" view port
- Reinforced cover plate protects load cells and junction box from debris
- Welded centering pin ensures proper alignment and prevents scale from lateral movement
- Two-channel iQUBE®
- Cal-Match™ algorithm automatically trims and calibrates scale
- Diagnostics to indicate excessive drift, A/D failures, connection errors, excitation voltage shifts and more

Wired Version

- Coiled interface cable from scale to indicator

Wireless Version

- ZigBee™ connection from scale to indicator
- Two lithium-ion Smart batteries included.
Scale operates using one battery for 24 continuous hours and requires only eight hours to fully charge.
- External battery charger

920i Indicator

- Stainless steel enclosure
- Two-piece mounting assembly with vibration isolators
- 4.6" W x 3.4" H, back-lit LCD graphical display (320 x 240 pixel)
- User program with data collection and transaction storage including: pro number, pro open/closed, employee ID, last transaction, time and date, actual weight and number of skids
- 1 MB internal memory for transaction records
- Diagnostics screen for troubleshooting
- Battery hours remaining displayed as bar graph on main screen (wireless version)
- On/Off toggle switch for forklift battery conservation

Additional 920i Indicator options:

- Symbol® barcode scanner
- WLAN card for real time data transmission to warehouse management system. Indicator alerts operators of potential errors and initiates e-mail of error notification.

Symbol® is a registered trademark of Symbol Technologies, Inc.

Specifications

SCALE CAPACITY:

5,000 lb

SCALE OVERLOAD:

200%

ULTIMATE OVERLOAD:

5:1 capacity

SCALE POWER:

Wired Version: supplied by indicator through coiled interface cable

Wireless Version: supplied by one lithium-ion Smart battery (SMBus revision 1.1 fully compliant)

SCALE MATERIAL/FINISH:

Painted Mild Steel

SCALE WARRANTY:

1-year limited warranty

SCALE APPROVAL:

NTEP-Certified per H-44 at 1,000 divisions, Class III, COC # 06-074

920i DISPLAY:

4.6" W x 3.4" H (116 mm W x 86 mm H), 320 x 240 pixel VGA Liquid Crystal Display (LCD) module with adjustable contrast

920i POWER - DC:

Line voltages: 9.3-36 VDC
DC input
Power consumption: 2.0 A Max

920i RATING/MATERIAL:

NEMA 4X/IP66, stainless steel

920i OPERATING TEMPERATURE:

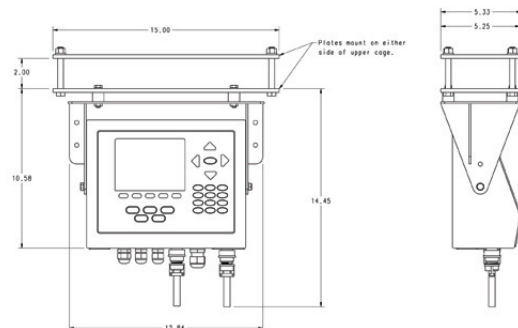
Legal: 14°F to 104°F (-10°C to +40°C)
Industrial: 14°F to 122°F (-10°C to +50°C)

920i WARRANTY:

2-year limited warranty

920i APPROVALS:

NTEP - at 10,000 Divisions, Class III/IIIL, CC# 01-088



CLS-920i

PART #	MODEL	WEIGHT	PRICE
CLS Forklift Scale			
96341	Scale PKG, 920i wired version	542 lb	\$ 7,100.00
96342	Scale PKG, 920i wireless version with 2 batteries and 2-bay charger	542 lb	8,365.00
Options/Accessories			
96345	Optional 10-bay charger		2,150.00
96355	Optional wireless LAN card for 920i		575.00
97480	Optional bar code scanner kit for 920i (Symbol model MS-3204 omni-directional and mounting hardware)		575.00
Manuals			
96312	CLS-920i installation manual		20.00
96313	CLS-920i operator card		10.00
96315	Service & troubleshooting manual		35.00